

پکیج LPIC-۱ | دوره به همراه مدرک بین المللی LPIC-۱ (آزمون ۱۰۱+۱۰۲)

شرح مختصر

پکیج دوره LPIC ۱ لینوکس به همراه مدرک بین المللی | Linux: System Administrator

مروری بر دوره

مروری بر دوره

شما با شرکت در این دوره موفق خواهید شد تا در کنار شرکت در دوره LPIC-۱ در پایان از این امکان برخوردار شوید که از طریق مؤسسه ارژنگ در آزمون بین المللی LPIC-۱ نیز شرکت نمائید.

[دانلود نقشه راه مدارک لینوکس](#)

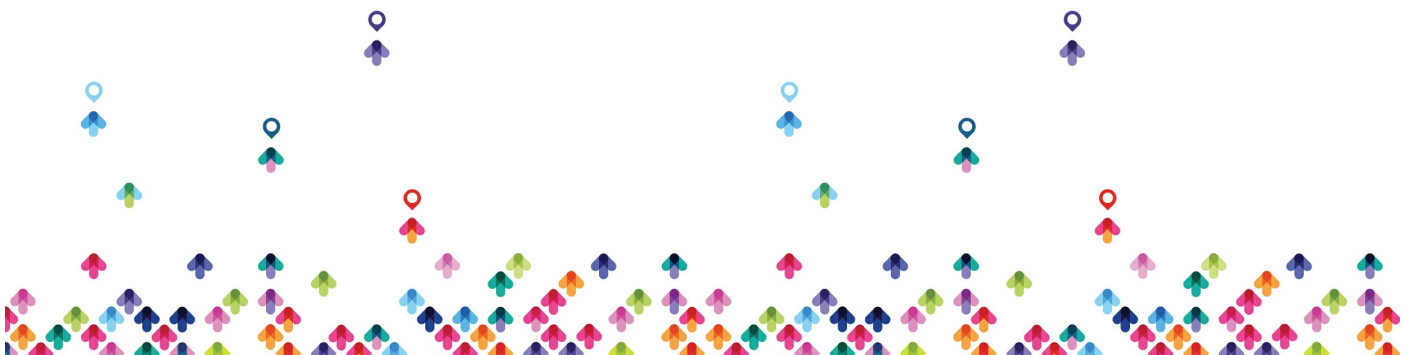
آنچه در این دوره خواهید آموخت

آنچه خواهید آموخت

- آگاهی از معماری سیستم لینوکس
- نصب و نگهداری **Linux workstation**، که شامل **X11** و راه اندازی آن به عنوان یک **client** شبکه می شود
- کار با خط فرمان، که شامل دستورات نام آشنا **GNU** و **Unix** می شود
- مدیرین فایل ها، مجوزهای دسترسی و همچنین امنیت سیستم
- انجام امور ابتدایی مرتبط با تعمیر و نگهداری همچون: کمک به کاربران، افزودن کاربران به یک سیستم بزرگ، پشتیبان گیری و بازیابی، خاموش کردن و راه اندازی مجدد

سرفصل ها (حضور)

سرفصل ها



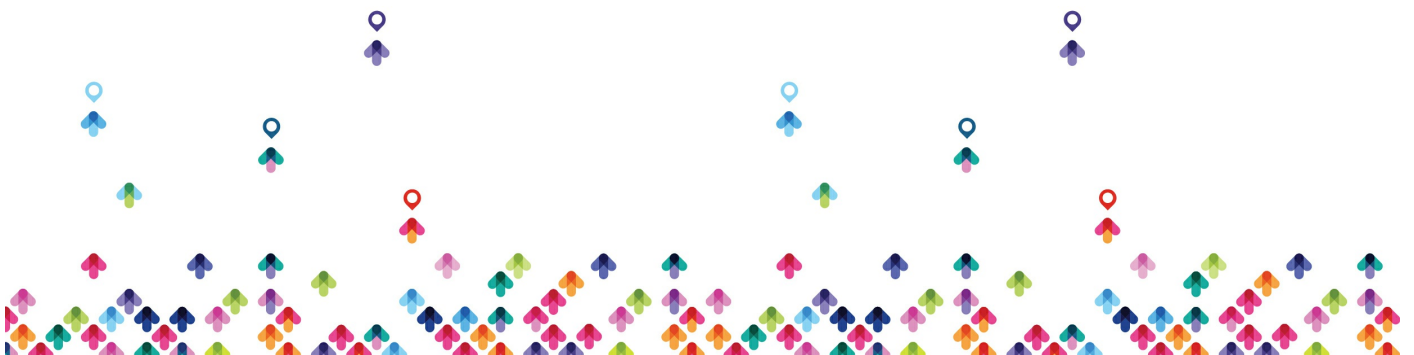
- Linux Fundamentals
 - Unix and its Design Principles
 - FSF and GNU
 - GPL - General Public License
 - The Linux Kernel
 - Components of a Distribution
 - Red Hat Linux Products
 - SUSE Linux Products
 - Debian
 - Ubuntu
 - Logging In
 - got root?
 - Switching User Contexts
 - Gathering Login Session Info
- Lab Tasks
 - Login and Discovery
 - Switching Users With su
- Work on the Command Line Lab Tasks
 - LPI Objectives Covered
 - Role of Command Shell
 - Shells
 - Gathering System Info
 - Identifying the Shell
 - Changing the Shell
 - Bourne sh: Prompts
 - bash: Bourne-Again Shell



- Help from Commands and Documentation
- Getting Help with man & info
- bash: Command Line History
- bash: Command Editing
- bash: Command Completion
- Shell and Environment Variables
- Key Environment Variables
- Help with Commands
- Linux Shells
- Shell Variables
- Bash History
- Aliases
- Use Streams, Pipes, and Redirects Lab Tasks
 - LPI Objectives Covered
 - File Redirection
 - Piping Commands Together
 - Filename Matching
 - File Globbing and Wildcard Patterns
 - Brace Expansion
 - General Quoting Rules
 - Nesting Commands
 - Multiple and Multi-line Commands
 - Gotchas: Maximum Command Length
 - Connecting Commands
 - Wildcard File Matching
 - Shell Meta-Characters



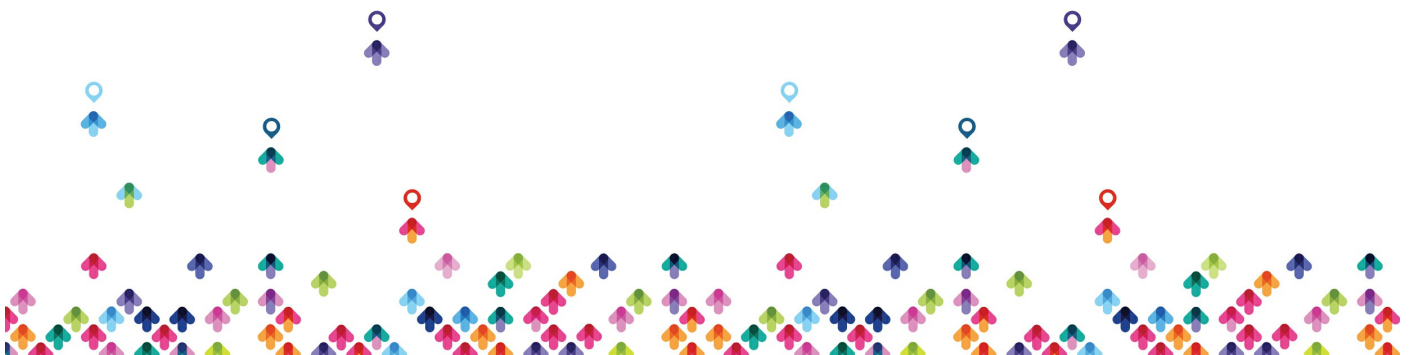
- Command Substitution
- Manage File Permissions and Ownership Lab Tasks
 - LPI Objectives Covered
 - Filesystem Hierarchy Standard
 - Navigating the Filesystem
 - Displaying Directory Contents
 - Filesystem Structures
 - Determining Disk Usage With df and du
 - File Ownership
 - Default Group Ownership
 - File and Directory Permissions
 - File Creation Permissions with umask
 - Changing File Permissions
 - SUID and SGID on files
 - SGID and Sticky Bit on Directories
 - User Private Group Scheme
 - Navigating Directories and Listing Files
 - Disk and Filesystem Usage
 - File and Directory Ownership and Permissions
- Create, Delete, Find, and Display Files Lab Tasks
 - LPI Objectives Covered
 - Directory Manipulation
 - File Manipulation
 - Deleting and Creating Files
 - Physical Unix File Structure
 - Filesystem Links



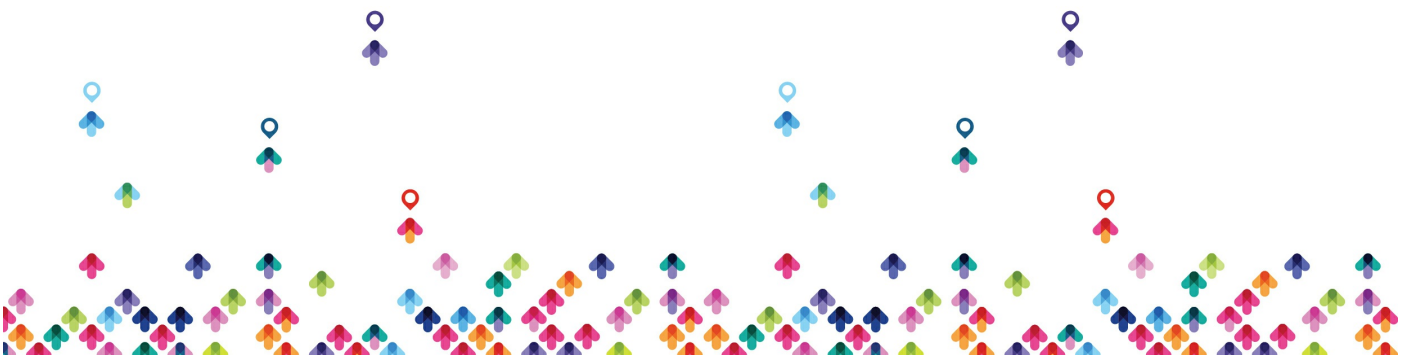
- File Extensions and Content
- Displaying Files
- Previewing Files
- Displaying Binary Files
- Which and Type
- whereis
- Searching the Filesystem
- Alternate Search Method
- Manually Installed Shared Libraries
- Manipulating Files and Directories
- Work with Archives and Compression Lab Tasks
 - LPI Objectives Covered
 - Archives with tar
 - Archives with cpio
 - The gzip Compression Utility
 - The bzip2 Compression Utility
 - The PKZIP Archiving/Compression format
 - Archiving and Compression
 - Using tar and cpio for Backups
- Process Text Streams Using Filters Lab Tasks
 - LPI Objectives Covered
 - Producing File Statistics
 - The Streaming Editor
 - Text Processing with awk
 - Replacing Text Characters
 - Text Sorting



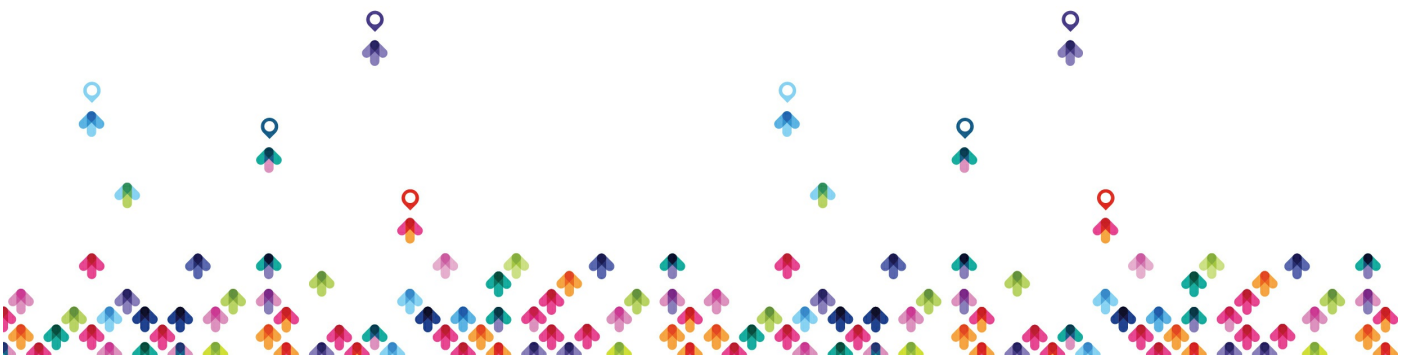
- Duplicate Removal Utility
- Extracting Columns of Text
- Combining Files and Merging Text
- Text Processing
- Processing Text Streams
- Search Text Files Using Regular Expressions Lab Tasks
 - LPI Objectives Covered
 - Searching Inside Files
 - Regular Expression Overview
 - Regular Expressions
 - RE Character Classes
 - RE Quantifiers
 - RE Parenthesis
 - Pattern Matching with Regular Expressions
 - Extended Regular Expressions
 - Using Regular Expressions With sed
- Perform Basic File Editing Operations Using vi Lab Tasks
 - LPI Objectives Covered
 - Text Editing
 - vi and Vim
 - Learning vi
 - Basic vi
 - Intermediate vi
 - Text Editing with Vim
- Create, Monitor, and Kill Processes Lab Tasks
 - LPI Objectives Covered



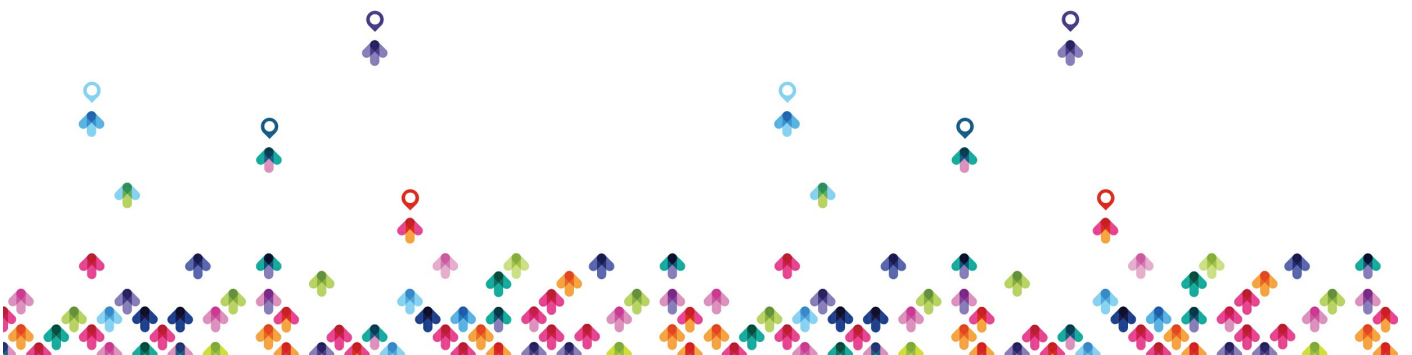
- What is a Process?
- Process Lifecycle
- Process States
- Viewing Processes
- Signals
- Tools to Send Signals
- Job Control Overview
- Job Control Commands
- nohup and disown
- Managing Processes
- Tuning Process Scheduling
- uptime
- Job Control Basics
- Process Management and Job Control Basics
- Use RPM, YUM, and Debian Package Management Lab Tasks
 - LPI Objectives Covered
 - Managing Software
 - RPM Architecture
 - Working With RPMs
 - Querying and Verifying with rpm
 - Installing Debian Packages
 - Querying and Verifying with dpkg
 - The alien Package Conversion Tool
 - Managing Software Dependencies
 - Using the YUM command
 - yumdownloader



- Configuring YUM
- The dselect & APT Frontends to dpkg
- Aptitude
- Configuring APT
- Working with RPMs on Ubuntu
- Querying the RPM Database
- Work with Partitions, Filesystems, and Disk Quotas Lab Tasks
 - LPI Objectives Covered
 - Partition Considerations
 - Filesystem Planning
 - Partitioning Disks with fdisk
 - Partitioning Disks with parted
 - Filesystem Creation
 - Filesystem Support
 - Unix/Linux Filesystem Features
 - Swap
 - Selecting a Filesystem
 - Filesystem Maintenance
 - Mounting Filesystems
 - Mounting Filesystems
 - Managing an XFS Filesystem
 - NFS
 - SMB
 - Filesystem Table (/etc/fstab)
 - Configuring Disk Quotas
 - Setting Quotas



- Viewing and Monitoring Quotas
- Hot Adding Swap
- Accessing NFS Shares
- Setting User Quotas
- Linux Boot Process Lab Tasks
 - LPI Objectives Covered
 - Booting Linux on PCs
 - GRUB Configuration
 - GRUB ۲
 - Boot Parameters
 - /sbin/init
 - System Init Styles
 - Linux Runlevels
 - /etc/inittab
 - /etc/rc.d/rc.sysinit
 - SUSE /etc/init.d/boot
 - System Initialization
 - Runlevel Implementation
 - systemd System and Service Manager
 - systemd Targets
 - Using systemd
 - Shutdown and Reboot
 - Boot Process
 - GRUB Command Line
 - Basic GRUB Security
 - Basic GRUB Security



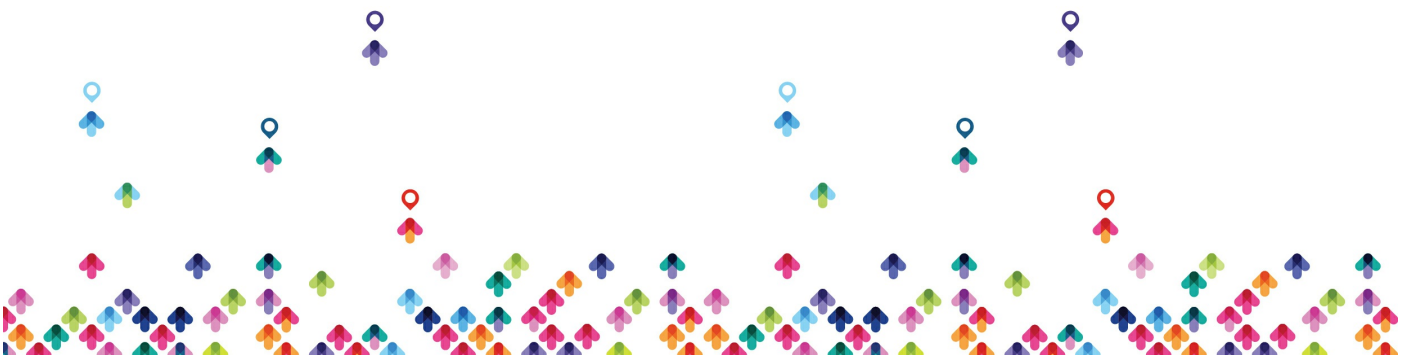
- Determine and Configure Hardware Settings Lab Tasks
 - LPI Objectives Covered
 - Managing Linux Device Files
 - Hardware Discovery Tools
 - Configuring New Hardware with `hwinfo`
 - PC Architecture and Bus
 - DMA & IRQ
 - USB Devices
 - USB Configuration
 - Configuring Kernel Components and Modules
 - Kernel Modules
 - Handling Module Dependencies
 - Configuring the Kernel via `/proc/`
 - Kernel Hardware Info `/sys/`
 - `/sys/` Structure
 - Adjusting Kernel Options

مخاطبان دوره

مخاطبان دوره

- مهندسين شبکه
- برنامه نويسان
- مديران شبکه
- مديران سرور

پيش نيازها



پیش نیازها

برای اخذ این مدرک هیچ پیش نیازی لازم نیست

