

دوره اچ پی | HPE OneView, Rev. ۱۷.۳۱

مروری بر دوره

مروری بر دوره

در این دوره دانشجویان چگونگی کار با راهکار مدیریت زیرساخت HPE OneView را آموزش خواهند دید. عناوین که در طی این دوره مطرح خواهند شد عبارتند از:

- مدل معماری HPE OneView
- ویژگی ها و قابلیت های محصولات
- چگونگی پیکربندی
- چگونگی معرفی و تشریح

آنچه در این دوره خواهید آموخت

آنچه خواهید آموخت

- توصیف راهکار مدیریت زیرساخت HPE OneView
- توصیف مدل معماری HPE OneView
- توصیف ویژگی های محصولات HPE
- توصیف قابلیت های محصولات HPE
- توصیف HPE و REST API
- توصیف ویژگی های جدید و مزایای HPE OneView ۳.۱

سرفصل ها (حضور)

سرفصل ها



Why HPE OneView?

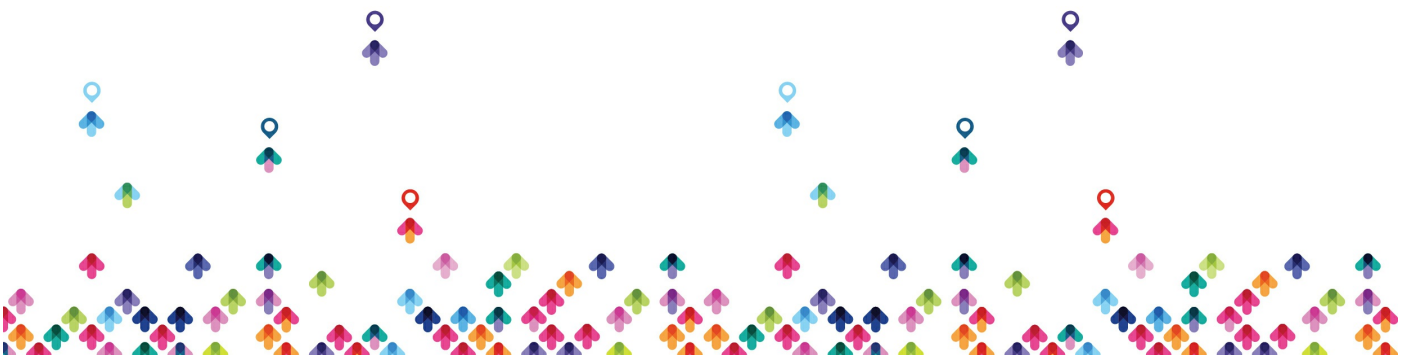
- Identify how data centers can be successful in the idea economy
- Explain how the Hewlett Packard Enterprise (HPE) Transformation Areas can address IT problems
- Explain the role of the HPE software-defined data center (SDDC)
- Describe the HPE SDDC architecture

HPE OneView Value Proposition and Key Features

- Describe how Hewlett Packard Enterprise (HPE) OneView offers a new approach to infrastructure lifecycle management
- Outline the key capabilities of HPE OneView, including:
 - Server provisioning
 - Storage management
 - HPE Virtual Connect networking
 - Automated change management with driver and firmware updates
- Summarize details about the HPE OneView integrations that provide additional support for partner management platforms
- Explain how the HPE Synergy framework leverages HPE OneView

Product and Architecture Overview

- Describe the architecture of Hewlett Packard Enterprise (HPE) OneView
- Explain how HPE OneView operates in environments with legacy applications, including:
 - HPE Virtual Connect Manager (VCM)
 - HPE Virtual Connect Enterprise Manager (VCEM)
 - HP Systems Insight Manager (HP SIM)



- Summarize HPE OneView licensing considerations
- Specify which devices and interconnect modules are supported by HPE OneView
- List the hardware requirements for rack servers and server blades that HPE OneView can manage, along with the system requirements of the HPE OneView virtual appliance
- Provide an overview of the HPE OneView installation process
- Customize the HPE OneView Dashboard

Adding and Managing Enclosures and Servers

- Summarize how to perform Hewlett Packard Enterprise (HPE) OneView configuration tasks and define key configuration elements including:
 - Enclosure groups
 - Logical interconnect groups
 - Logical interconnects
 - < >Uplink sets
 - < >Server hardware types
 - Server hardware
 - Storage systems
 - SAN managers
- < >Outline the key features of the HPE OneView Connectivity Resource Manager
- Explain how to add enclosures to HPE OneView
- Describe the primary functions of the HPE OneView Physical Server Resource Manager
- List the steps involved in processing and handling hardware



components

- Explain how HPE OneView performs firmware management
- Describe the purpose of the HPE OneView Storage Resource Manager

Creating and Managing Server Profiles

- Outline the basic features and functions of server profiles
- Describe how to manage server profile addresses and identifiers
- Summarize the process of creating server profile connections, including advanced attributes
- Explain how to manage:
 - Server profile SAN storage
 - Server profile boot order and BIOS settings
- Describe Hewlett Packard Enterprise (HPE) OneView integration for virtualization management, including VMware vCenter and Microsoft System Center

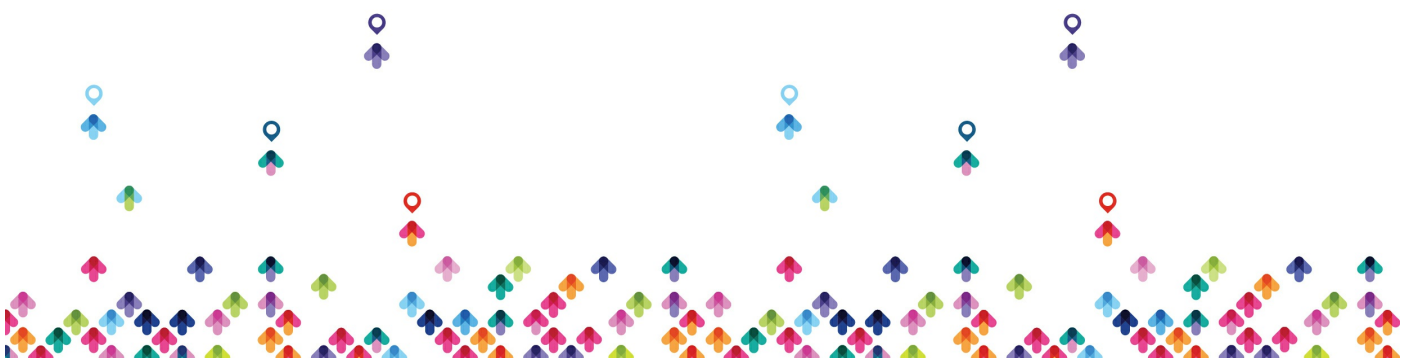
Resource Health Monitoring

Describe the key resource health monitoring operations of HPE OneView, including:

- Alert-based operations
- Status polling and collection operations
- Alert email notifications and predefined reports

Environmental Resource Manager

- Explain how Hewlett Packard Enterprise (HPE) solutions address data center problems



- Describe the architecture of the HPE OneView Environmental Resource Manager
 - Explain how HPE OneView collects and displays utilization data
 - Outline the process of HPE Intelligent Power Distribution Unit (iPDU) discovery
 - Use HPE OneView to configure 3D data center topology information
- HPE OneView Appliance Security**
- Describe Hewlett Packard Enterprise (HPE) OneView security features and operations
 - Explain design features that provide security
 - Implement external authentication of HPE OneView management users
 - Manage the HPE OneView web server certificate
- REST API**
- Explain the origins and use benefits of the Representational State Transfer (REST) application programming interface (API)
 - Describe the resource-oriented architecture of Hewlett Packard Enterprise (HPE) OneView
 - Perform the basic operations of the four REST API calls
 - Explain how to use the HPE OneView PowerShell Library
- What's new in OneView 3.1**
- Explain the features added with OneView 3.1 and their benefits, including
 - Platform Support
 - SIMPLIFY Lifecycle Operations
 - Virtual Connect §



- Global Dashboard v۱.۲
- OneView Remote Support
- Describe the features and benefits of the Image Streamer ۳.۱

مخاطبان دوره

مخاطبان دوره

مخاطبین این دوره عمدتاً دارای عناوین شغلی زیر هستند:

- مشاوران فروش
- مشاوران فنی
- مهندسان سیستم
- مهندسان Pre-sales
- مهندسان فروش

پیش نیازها

پیش نیازها

داشتن یکی از مدارک زیر:

- HPE ATP Server Solutions V۳
- HPE ATP Data Center Solutions V۱

